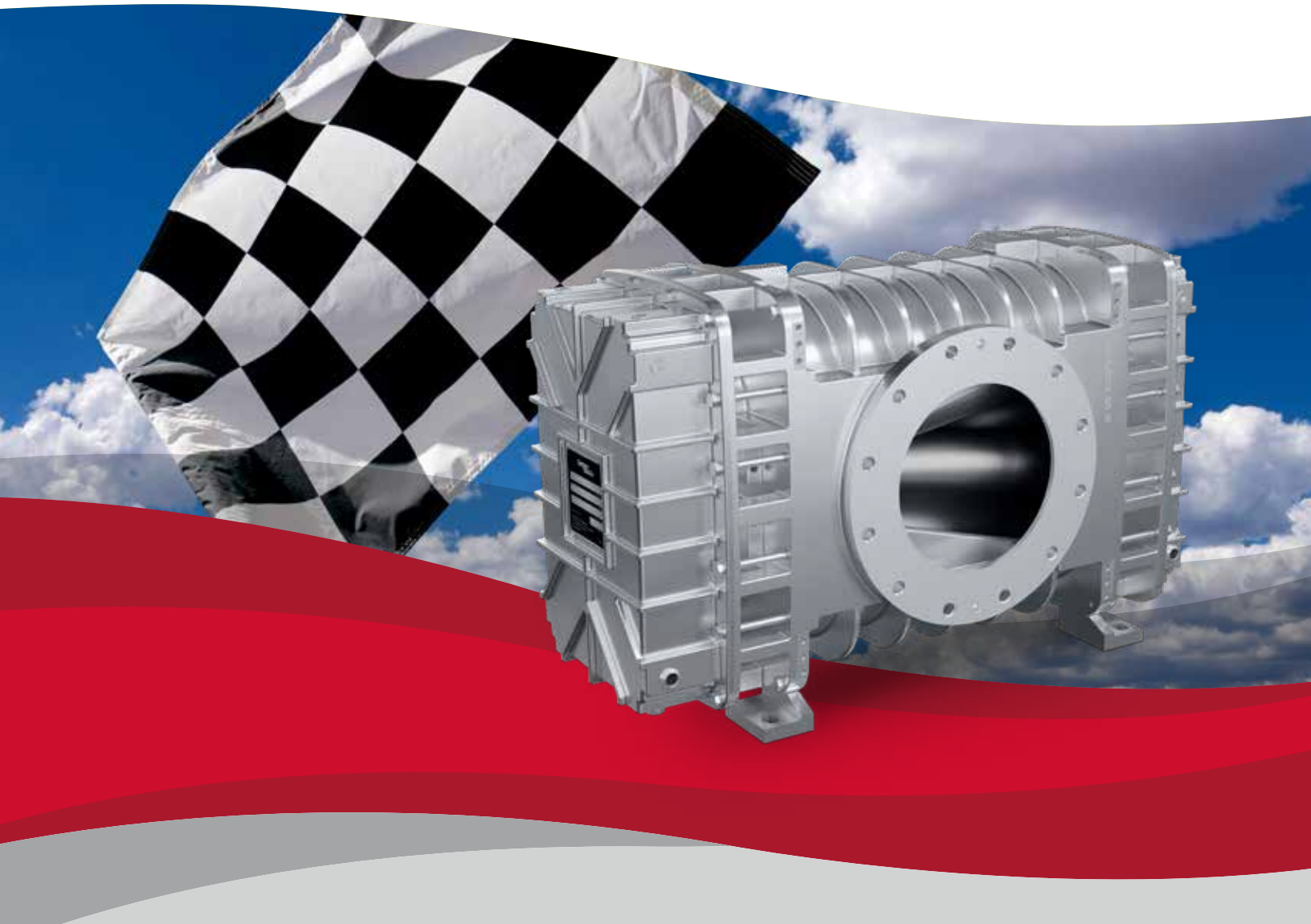


Gardner
Denver

POSITIVE DISPLACEMENT BLOWERS & VACUUM PUMPS
8" HELIFLOW INDUSTRIAL SERIES

The HeliFlow Advantage



It's all about...

the Savings



RUGGED CONSTRUCTION

Reduces
maintenance
and downtime



GREATER EFFICIENCY

Lowers operating costs



QUIETER OPERATION



Reduces enclosure and hearing
protection requirements

Lower Cost + Higher Revenue
SAVES MONEY



**HIGHER
REVENUE**



PERFORMANCE

Higher pressure, vacuum
and temperature limits

It's all about...

Design Advantages

1 Reduced Noise

- Solid, helical tri-lobe rotor
- Significantly reduces dBA by reducing pulsation
- Solid rotor eliminates vibration issues due to material build-up



2 Smooth & Efficient Helical Gears

- Precision ground helical teeth
- Provide less vibration & noise vs. spur gears
- Reduces friction loss for efficiency
- Holds inter-lobe clearance constant
- Press-fit eliminating need for locking device and non-slip timing



3 The Best Sealing Available

- Piston ring seals on air and oil side
- 2 air side/2 oil side
- Competitive units only on air side





4 Higher Overhung Load & No Restrictions On Belt Pull Direction

- Spherical roller bearings at all four locations
- Maximum misalignment protection
- High axial and radial load capacity
- Eliminates restrictions on belt pull direction



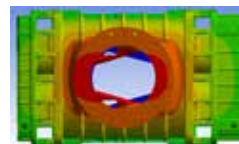
5 Optimized Shaft Machining

- Reduces stress concentration
- Solid cast design provides rigidity for reduced rotor deflection



6 Cooler Oil Temperatures

- New bearing housing design
- Breathable air gap for optimized heat transfer
- Ribbed aluminum sump cover further optimizes heat transfer
- Oil cooler not required at higher pressures or vacuum



Better Efficiency, Higher Flow Ranges
& No Oil Cooler Required

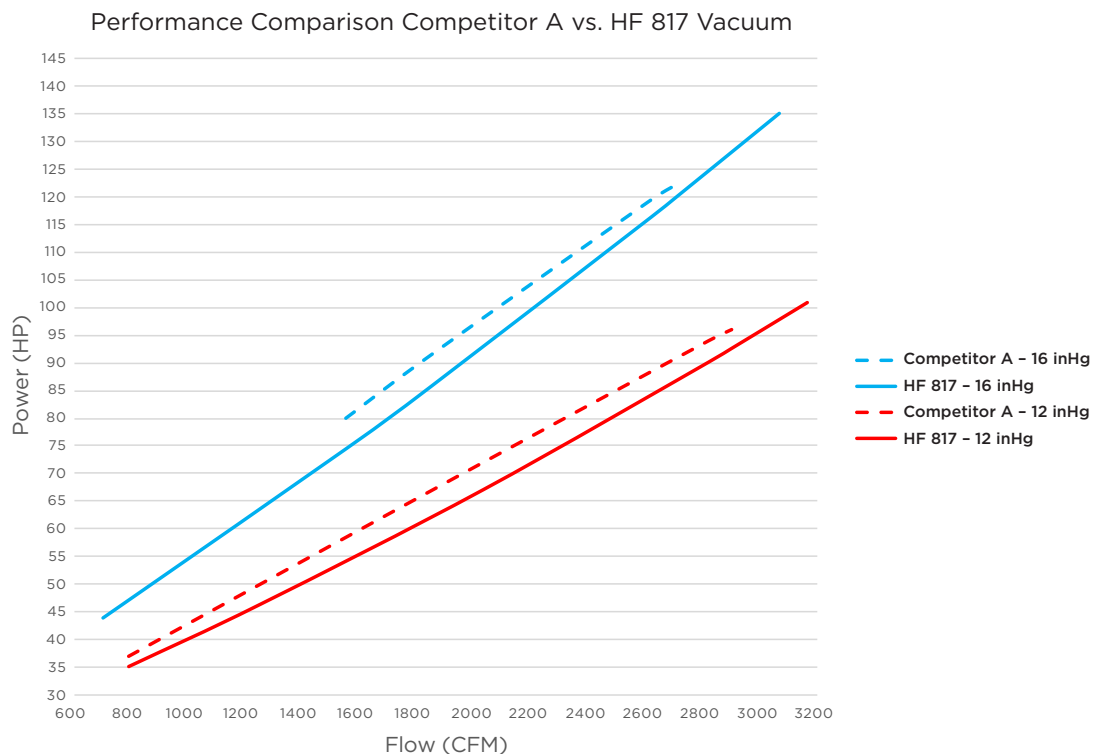
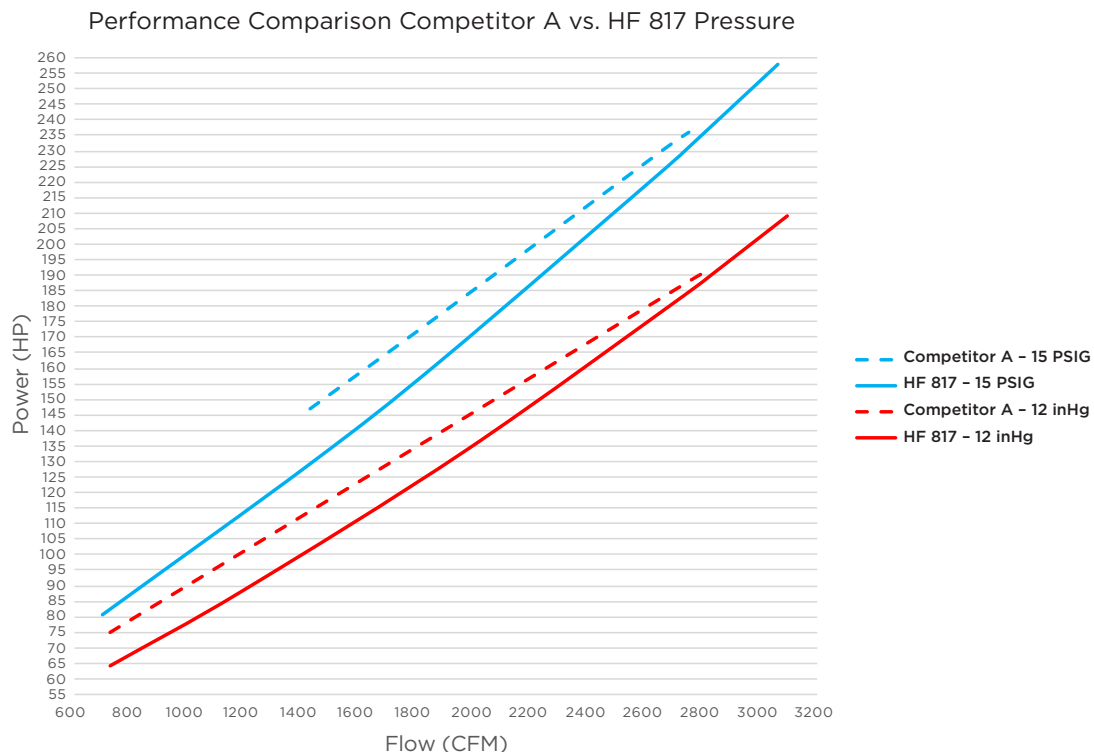
HF 817 vs. Competition

PRODUCT DESIGN	HF 817	COMPETITOR A
LOBES	3 Helical	2 Straight
CYLINDER LENGTH	17"	17"
GEAR DIAMETER	8.75"	8.00"
DISPLACEMENT	1.309 CFR	N/A
MAX SPEED	2650 RPM	2250 RPM
MAX PRESSURE	18 PSIG	18 PSIG*
MAX VACUUM	17 inHG	16 inHG*
MAX FLOW @ 15 PSIG	3060 CFM	2750 CFM
MAX TEMP RISE	265° F	260° F*
LUBRICATION	DSL	DSL
INLET/DISCHARGE	10" ANSI	10" ANSI
MAX OVERHUNG LOAD	19,500 lb.-in (Any Belt Pull Angle)	18,000 lb.-in (Specified Angle)
SHAFT DIAMETER	3.00"	2.75"
WEIGHT	1405 lbs	1200 lbs

*Oil Cooler required for competitive unit's operation above 15 psi and 15 inHg

Up to 12% Increased Efficiency

Increased Flow Capacity



HF 825 vs. Competition

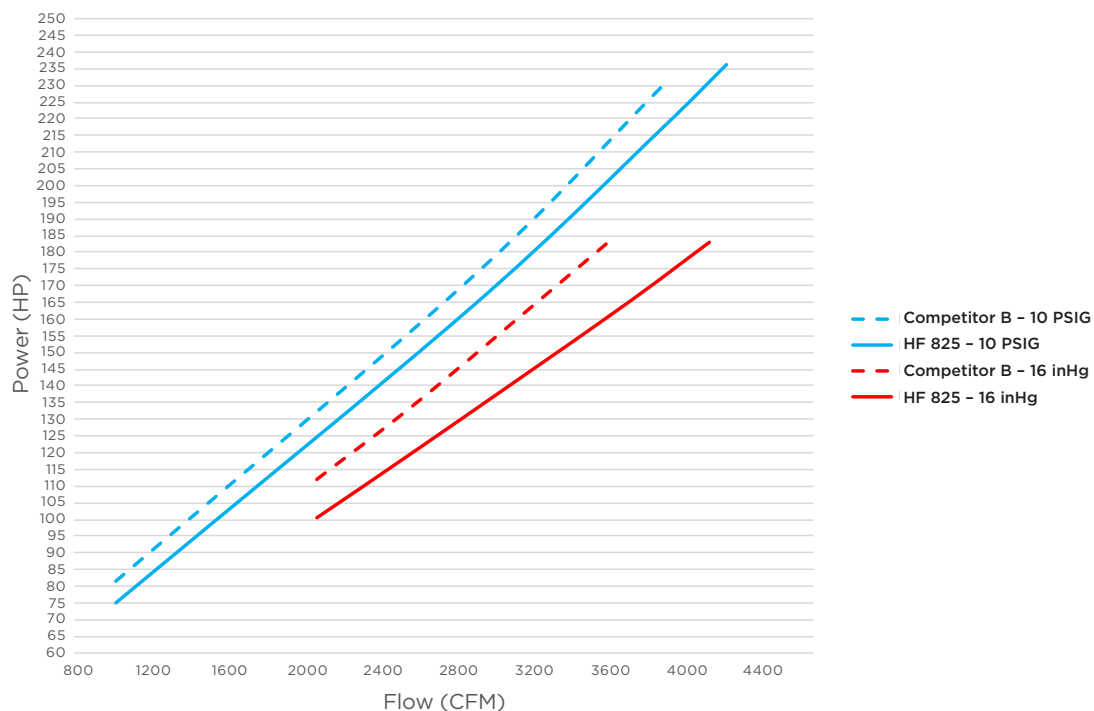
PRODUCT DESIGN	HF 825	COMPETITOR B	COMPETITOR C
LOBES	3 Helical	2 Straight	2 Straight
CYLINDER LENGTH	25"	24"	27"
GEAR DIAMETER	8.75"	8.00"	8.00"
MAX SPEED	2500 RPM	2250 RPM	2250 RPM
MAX PRESSURE	15 PSIG	15 PSIG	13 PSIG
MAX VACUUM	17 inHG	16 inHG*	16 inHG*
MAX FLOW @ MAX DP	4160 CFM @ 15 PSIG	3715 CFM @ 15 PSIG	4320 CFM @ 13 PSIG
MAX TEMP RISE	265° F	260° F*	260° F*
LUBRICATION	DSL	DSL	DSL
INLET/DISCHARGE	12" ANSI	12" ANSI	14" ANSI
MAX OVERHUNG LOAD	19,500 lb.-in	18,000 lb.-in	18,000 lb.-in
SHAFT DIAMETER	3.00"	2.75"	2.75"
WEIGHT	1820 lbs	1330 lbs	1600 lbs

*Oil Cooler required for competitive unit's operation above 15 inHg

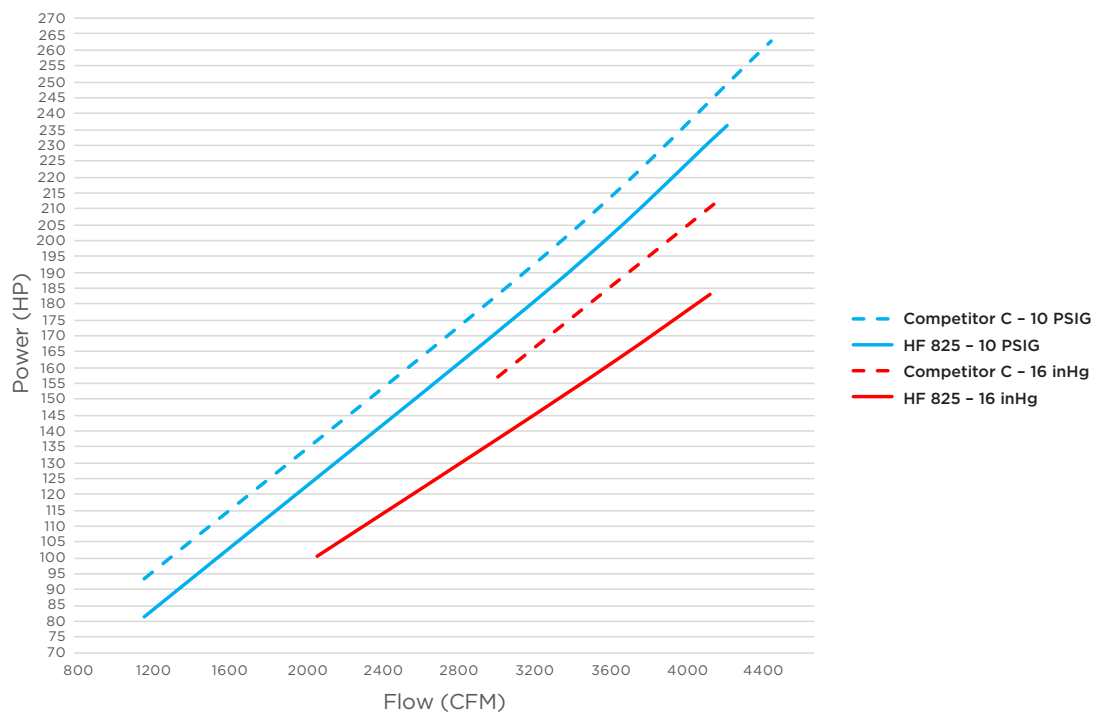
Up to 13% Increased Efficiency

Increased Flow Capacity

Performance Comparison Competitor B vs. HF 825



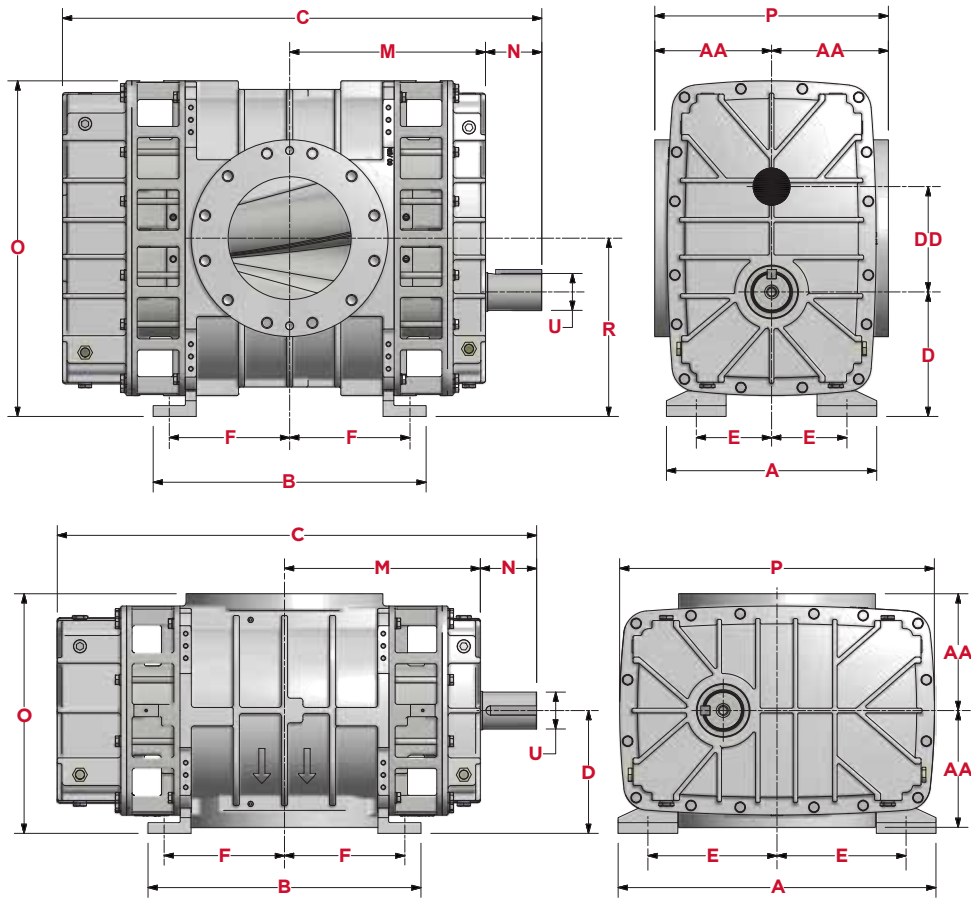
Performance Comparison Competitor C vs. HF 825



Dimensional Data

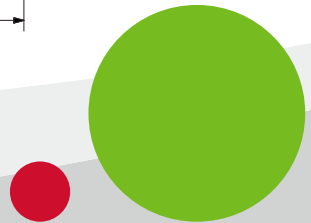
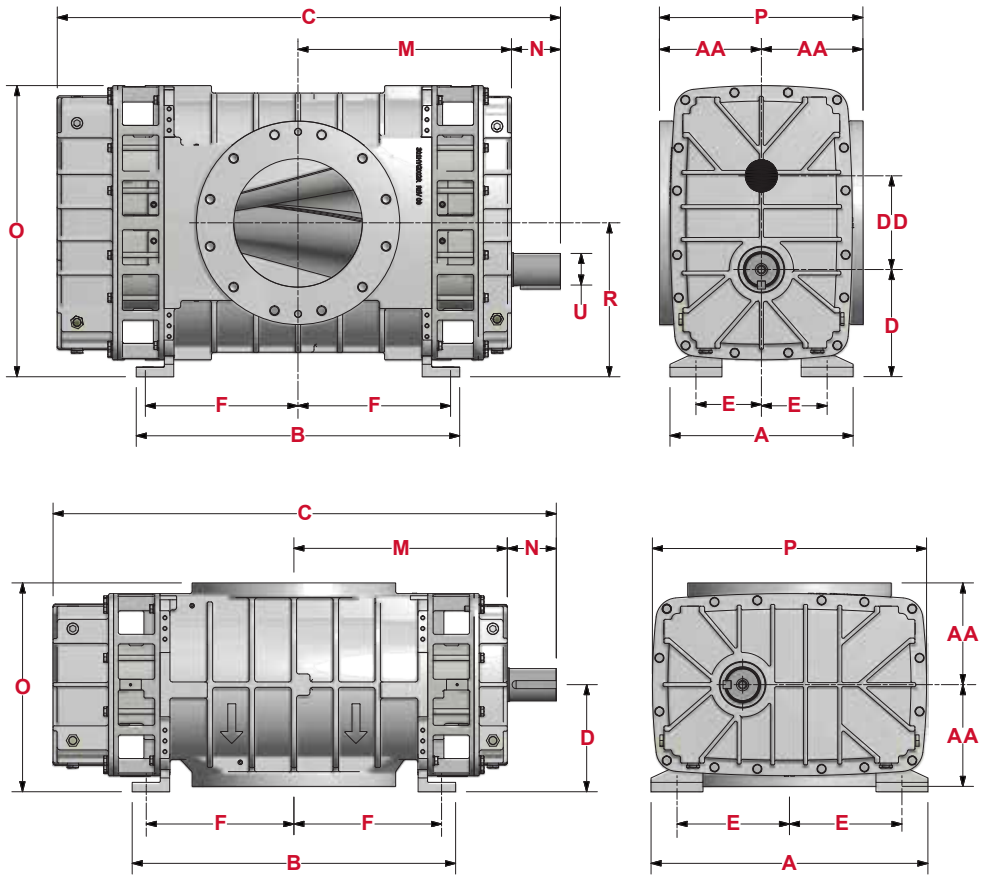
MODEL	VERTICAL													
	A	B	C	D	E	F	M	N	O	P	R	U	AA	DD
HF 817	17.10	22.20	38.99	10.00	7.50	10.00	15.93	4.58	27.18	19.00	14.38	3.00	9.50	8.75
COMPETITOR A	19.00	24.25	38.44	10.00	7.50	10.88	14.63	4.88	28.38	19.00	14.00	2.75	9.50	8.00

MODEL	HORIZONTAL											
	A	B	C	D	E	F	M	N	O	P	U	AA
HF 817	25.85	22.20	38.99	10.00	11.50	10.00	15.93	4.58	19.50	25.60	3.00	9.50
COMPETITOR A	27.00	24.25	38.44	10.00	11.50	10.88	14.63	4.88	20.38	25.25	2.75	9.50



MODEL	VERTICAL													
	A	B	C	D	E	F	M	N	O	P	R	U	AA	DD
HF 825	17.10	30.20	46.99	10.00	7.50	14.00	19.93	4.58	27.18	19.00	14.38	3.00	9.50	8.75
COMPETITOR B	19.00	30.50	44.69	10.00	7.50	14.00	17.75	4.88	28.38	19.00	14.00	2.75	9.50	8.00
COMPETITOR C	19.00	34.00	48.19	10.00	7.50	15.75	19.50	4.88	28.38	19.00	14.00	2.75	9.50	8.00

MODEL	HORIZONTAL											
	A	B	C	D	E	F	M	N	O	P	U	AA
HF 825	25.85	30.20	46.99	10.00	11.50	14.00	19.93	4.58	19.50	25.60	3.00	9.50
COMPETITOR B	27.00	30.50	44.69	10.00	11.50	14.00	17.75	4.88	20.38	25.25	2.75	9.50
COMPETITOR C	27.00	34.00	48.19	10.00	11.50	15.75	19.50	4.88	20.38	25.25	2.75	9.50



The leader in every market we serve
by continuously improving all business processes
with a focus on innovation and velocity

Gardner
Denver[®]


Gardner Denver, Inc.

1800 Gardner Expressway
Quincy, IL 62305
866-428-4890

www.gardnerdenver.com/gdproducts



©2018 Gardner Denver, Inc. Printed in U.S.A.
PD-HF8-COMPARE 1st Ed. 8/18

 Please recycle after use.